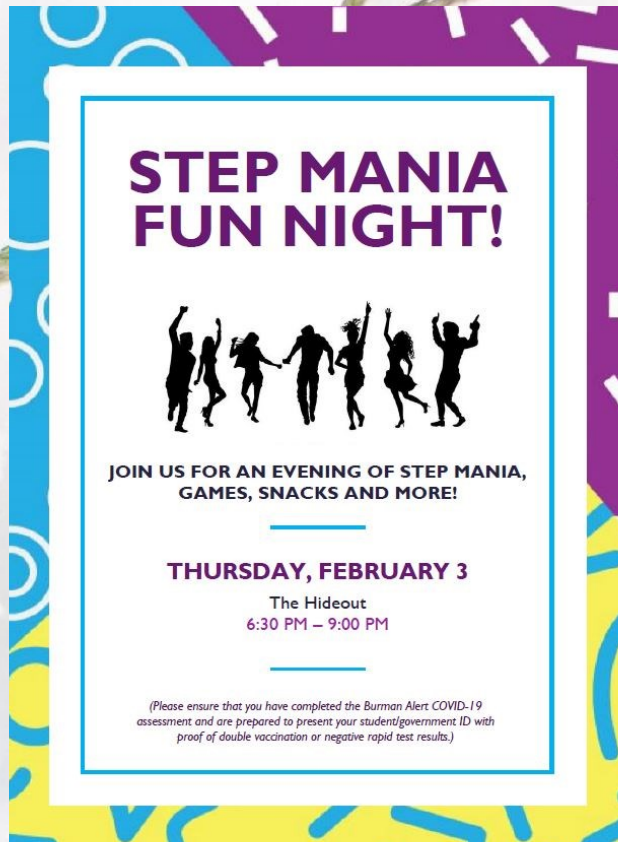



# CAMPUS CONNECTIONS

A Newsletter for Burman University

Thursday, 03, February 2022



**STEP MANIA  
FUN NIGHT!**



JOIN US FOR AN EVENING OF STEP MANIA,  
GAMES, SNACKS AND MORE!

**THURSDAY, FEBRUARY 3**  
The Hideout  
6:30 PM – 9:00 PM

(Please ensure that you have completed the Burman Alert COVID-19 assessment and are prepared to present your student/government ID with proof of double vaccination or negative rapid test results.)

SENATE | MARRIED/COMMUNITY SENATOR

## ONLINE FAMILY WORSHIP & PRAYER

led by pastor shaun young

+ online bible jeopardy!



February 4, 2022 @ 6:30PM

ZOOM: 960 7218 5625  
Password: burman

### Important Academic Dates

February 8 50% Tuition Refund for full-term courses begins

February 9 Last day to withdraw from any first 1/2 term course without incurring an F

See [Academic Dates](#) for further information.

### Week at a Glance

Sunset: 5:26 pm

Friday, February 4

7:30 pm

CAYA

SABBATH

FIRST SERVICE 9:15 am

Speaker: Pastor Romando Carey

SABBATH SCHOOL

10:30 am

College Heights Church Sabbath School Coordinator

*The Makers Bible Study*

Coordinator - Shelley Agrey

Social Eyez

11:00 am

Campus Ministries Sabbath School

Administration Building Chapel

12:00 pm

IGNITE

Speaker: Pastor Romando Carey

Coming up....

Saturday, February 5

Skate Night - Burman Rink

Bee Keeping Club

7 pm

Sunday, February 6

BBSA Brunch

Casey's Cabin

Tuesday, February 8

POWERUP

Campus Ministries

Wednesdays

Drop-in Counselling with

Tamara van Rensburg

11 am -1 pm

This Saturday, February 5 at 7pm, the Bee Keeping Club will be hosting Valentine's themed skate night at the Burman skating rink. We will have hot chocolate and Timbits to give out, not to mention a super cute photo background for you and your date! Dates can be anyone-someone special, family members, or sweethearts. Bring your friends!

For those of you who do not have skates, you can sign out a pair with Mr. Schafer, or just come enjoy the night by the fire and take in the scenery. Never skated before? No worries! We will have experienced skaters to tie up your skates for you and to help you out! Due to the fact that not everyone has a suitable helmet and equipment to wear, we ask please no hockey scrimmages or sticks on the rink while others are skating.



Thinking of Valentines? The Burman Bees have you covered!! We have special valentine treat bags and notes (signed or anonymous) for your sweetheart, secret admirer, or favourite professor! ☑ The cost is FREE and our busy bees will deliver your special packages to your recipients on Valentine's Day themselves! Just let us know what you would like your message to say and who we are delivering to. Please have your requests in by Friday, February 11th at midnight. You can email us at [beekeeping@burmanu.ca](mailto:beekeeping@burmanu.ca). Don't delay!

PEAC244, Badminton, is still open to anyone who is interested. It will start on **February 25th** at 8.00 a.m.

Alberta Happiness Basics™

Mondays - Jan 24<sup>th</sup> to Feb 14<sup>th</sup>  
12:00 to 1:00 - Room 0A41

Learn skills to boost your overall happiness!  
... including how to: savour the moment, practice mindfulness,  
develop positive emotions, and focus attention on what is going well

Come to the Sakala Success Centre to sign up ©

# Africa: Land of Pharaohs and Great Lives of African Descent

IN HONOR OF DR. AND MRS. NOBLE DONKOR

February 1 - February 15  
2022  
Chan Shun Science Centre  
Atrium

Sponsored by  
the Philosophy  
Department

BURMAN UNIVERSITY STUDENT ASSOCIATION

# BUSA ELECTIONS

president | executive | financial | social | student life | communications  
APPLICATIONS DUE WEDNESDAY, FEBRUARY 16, 2022 @ 12PM



**WE ARE HIRING**

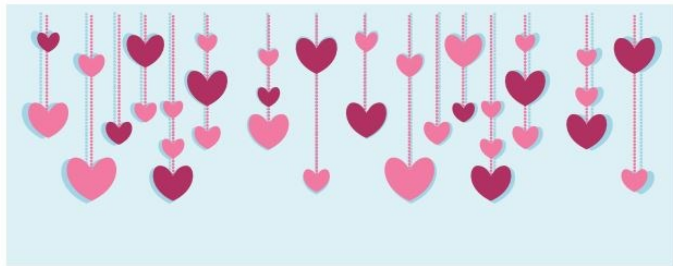
**APPLY TODAY**

**BURMAN MINISTRY CENTRE**

**CENTRE DU MINISTÈRE BURMAN**

The **Burman Ministry Centre** is hiring content creators, recording technicians, video & audio production technicians, social media creators, advertising, and web designers who are passionate about supporting Christian ministries.

Prior experience valuable.  
5-7 hours/week.



## VALENTINE'S Cookie Decorating

Bring a friend (or a loved one!) to this Serendipi-Tea event and have a fun time of connection while decorating cookies and enjoying a delicious lunch (making your own wrap!)



FEBRUARY 10, 2022

11:30 – 1:00 PM

THE HIDEOUT – REP EVENT

# VALENTINE'S DAY BRUNCH

*for Married Students & Students with Children*

**SUNDAY, FEBRUARY 13  
11:00 AM AT CASEY'S CABIN**

**RSVP TO THE EMAIL INVITATION BY FEB 8  
SPONSORED BY STUDENT SERVICES & DONATIONS FROM FACULTY & STAFF**

[Sign up here](#)



# Student Leadership Opportunities

Are you the missing piece to our leadership team?

**SWAT** (Student Welcome Affirmation Team) Student Services is looking for next year's team. We will need you to be on campus **August 22** for training. Qualification information, job description and application form is available at <https://www.burmanu.ca/student-services>. If interested, please fill out the application form and return it to [melody@burmanu.ca](mailto:melody@burmanu.ca) by **Monday, February 28**.

**Campus Ministries** is accepting applications for the 2022-2023 Leadership Team. The application form is available at <https://www.burmanu.ca/student-services>. Please complete the form and email it to Pastor Massiel at [massiel@burmanu.ca](mailto:massiel@burmanu.ca) by **Tuesday, February 15**.

How to burn thousands of calories in just a few minutes



I DIG, YOU DIG, WE  
DIG, HE DIG, SHE  
DIG, THEY DIG...

IT'S NOT A  
BEAUTIFUL POEM  
BUT IT'S VERY DEEP.